

Forty-Eighth

48

Annual
Conference

Marriot Key Bridge Hotel
Arlington, Virginia

Host Institution:
George Mason University

October 29-31, 2009

Nominating Books for Current Research Sessions

Eligible Books: Authors or publishers are encouraged to send two copies of monographs on topics of interest to continental philosophers, published on or after January 1, 2006.

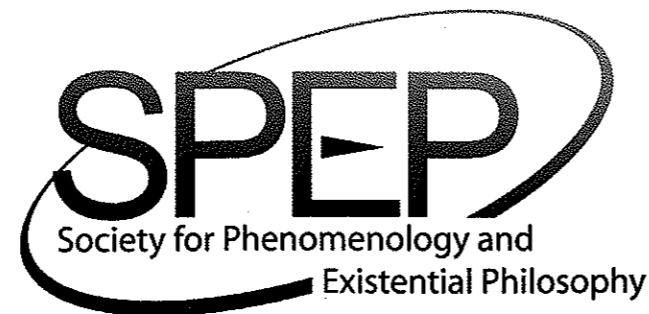
Postmark Deadline: **February 2, 2009**

Send to:

Brian Schroeder
Department of Philosophy
Rochester Institute of Technology
Rochester, NY 14623-1604

Notification

The Committee's recommendations will be forwarded to the Executive Committee, and the authors of the books chosen for Current Research Sessions will be notified by: **June 1, 2009**



CALL FOR PAPERS

The Executive Committee Invites

Complete Papers (3,000 words) with Abstracts (75-100 words)

Panel Proposals (NOTE CHANGE: one panel abstract and COMPLETE PAPERS for each presentation)

Current Research Session Proposals (Book Nominations)

Papers and panels from diverse philosophical perspectives in all areas of Continental Philosophy are welcome. Also encouraged are papers and panels on SPEP members.

For further information, please contact either of the Executive Co-Directors:

Cynthia Willett
Department of Philosophy
Emory University
214 Bowden Hall
Atlanta, GA 30322
Cynthia.willett@emory.edu

Leonard Lawlor
Department of Philosophy
Penn State University
240 Sparks Building
University Park, PA, 16801
E-mail: lul19@psu.edu

SPEP web site:
<http://www.spep.org>

There are two prizes available: the best submission by a junior scholar and the best submission by a graduate student. To be eligible for the SPEP Junior Scholar Award you must have earned a Ph.D. in the last five years (no earlier than 2004). All currently enrolled graduate students are eligible for The SPEP Graduate Student Scholar Award.

Each prize is \$500.00 plus a travel and hotel allowance. Each of the award-winning submissions will be selected through an anonymous review process. You must declare your desire to be considered for an award and your status as a graduate student or as a junior scholar on the cover sheet that accompanies your submission, which has been prepared for blind review. Winners will be notified by June 1, 2009.

Postmark Deadline for all Submissions:

February 2, 2009

Submitting Paper and Panel Proposals

Postmark Deadline: **February 2, 2009**

Electronic Submissions:

Starting with submissions for the 2009 meeting, SPEP will accept electronic submissions on our web site. More information will be available at: <http://www.spep.org>

Paper Submissions:

SPEP will also accept paper submissions.

Please send three copies to:

Shannon Lundeen, SPEP Secretary/Treasurer
University of Pennsylvania 249 S. 36th Street,
411 Cohen Hall Philadelphia, PA 19104-6304
Email: shannonspep@gmail.com
Phone: 215-898-9607 Fax: 215-898-1803

Format

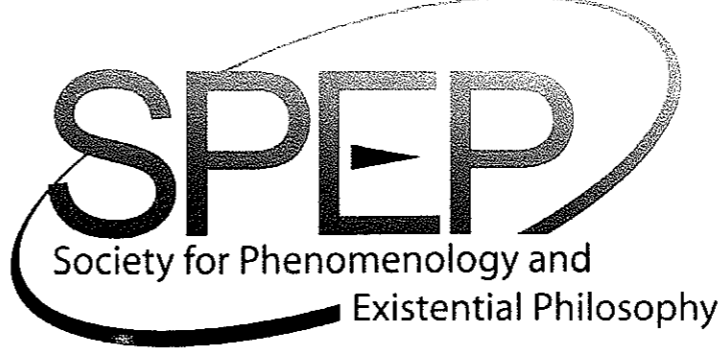
Paper submissions must include complete papers (of no more than 3,000 words) and abstracts (of no more than 100 words). Panel proposals must include a title, an abstract of no more than 500 words for the panel as a whole, and complete papers (no more than 3,000 words) for each paper in the panel. Since papers and panel proposals are chosen through an anonymous review process, names and addresses of authors and panel must be stated only on one(1) separate cover sheet and omitted from the abstracts, papers, and footnotes. The word count for papers should appear on the cover sheet; papers that exceed the 3,000 word limit will be returned to the author. Please use gender-inclusive language in accordance with the "Guidelines for Non-Sexist Use of Language" published by the APA and available at: <http://www.apa.udel.edu/apa/publications/> Also specify any AV equipment that will be needed.

Notification

Authors and panel organizers will hear from the Executive Committee by June 1, 2009. SPEP maintains the right of first review on presented papers for publication consideration in its edited volumes, which appear as special issues of **Philosophy Today**.

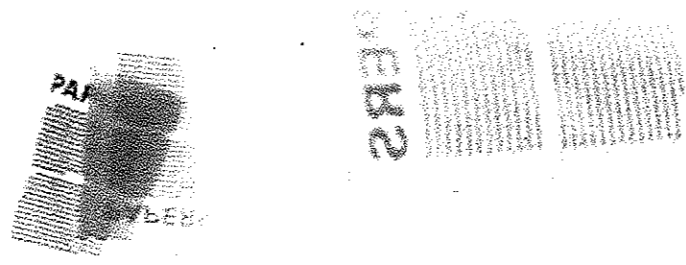
Members of SPEP are also encouraged to submit their papers to the APA for consideration. Guidelines for submission can be found at:

<http://www.apa.udel.edu/apa/divisions/papers>



call for **PAPERS** **48**
 Forty-Eighth Annual Conference

Marriott Key Bridge Hotel, Arlington, VA
 Host Institution: George Mason University
 October 29-31, 2009



Leonard Lawlor, Co-Director
 Penn State University
Cynthia Willett, Co-Director
 Emory University
Amy Allen, Dartmouth College
Andrew Cutrofello, Loyola University of Chicago
Shannon Lundeen, University of Pennsylvania
Anthony Steinbock, Southern Illinois University
 at Carbondale

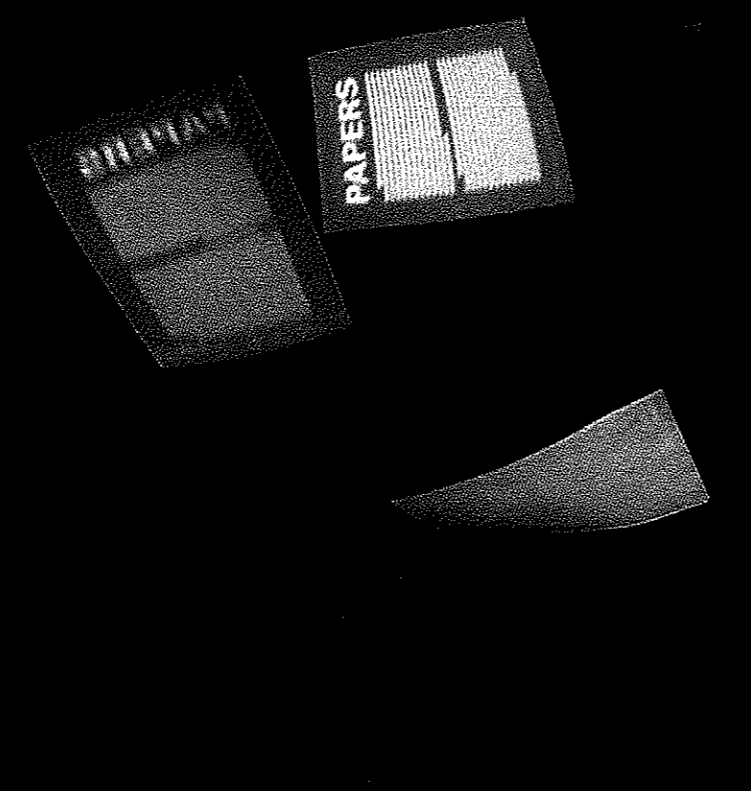
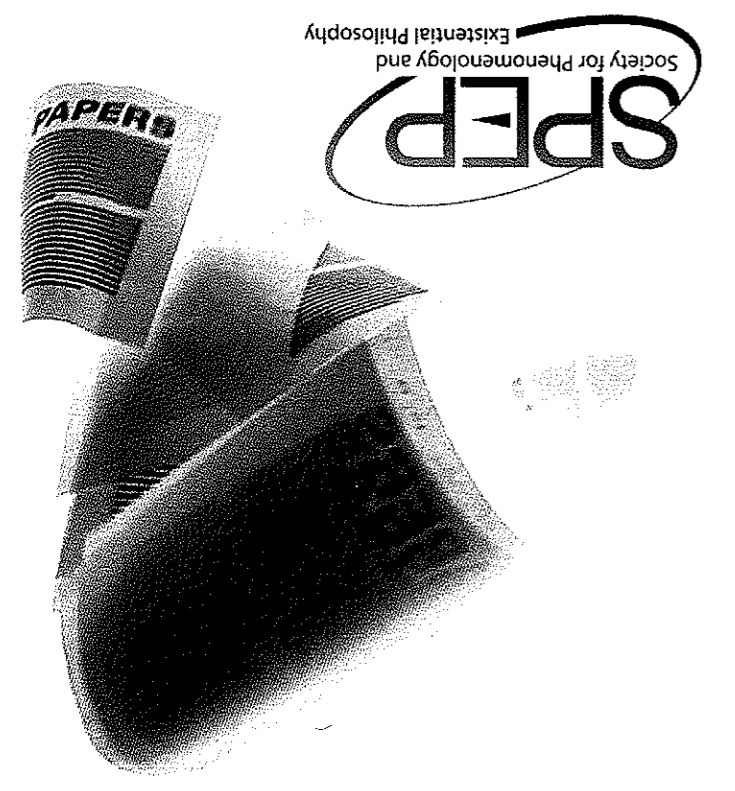
mail to:
Shannon Lundeen
 University of Pennsylvania
 249 S. 36th Street
 411 Cohen Hall
 Philadelphia, PA 19104-6304

Please send your check (payable to SPEP)
 for the 2008-2009 membership dues
 Faculty: \$60 membership and \$25 registration
 Students: \$20 membership and registration (combined)

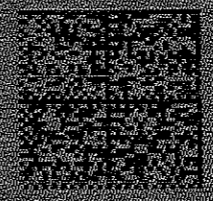
Dues Reminder

Executive Committee

call for **PAPERS**



US POSTAGE
 \$00.420
 12-03-2008
 010120520119



Dr. Alan D. Schrift
 Gannett College
 Dept. of Philosophy
 P.O. Box 805
 Gannett, IA 50112-0806

Emory University
 Department of Philosophy
 214 Bowden Hall
 Atlanta, GA 30322